

# Photon 300D Installation & Quick Start Guide

To install the Photon 300D and get started:

1. Connect power.
2. Connect the Photon 300D to the network.
3. Access the Photon 300D.
4. Change the management configuration.
5. Access the Stellar Cyber UI.

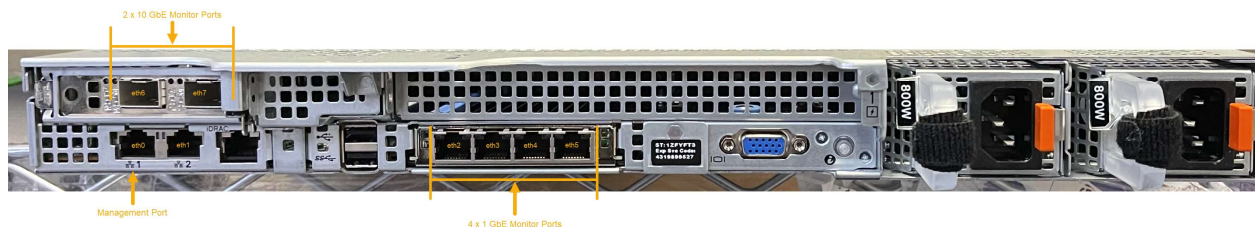
## Connecting Power

To connect power to the appliance:

1. Connect the included power cables to the power source.
2. Connect the power cables to the rear of the Photon 300D.
3. Press the power button on the front of the Photon 300D.



## Connecting to the Network



To connect the Photon 300D to the network:

1. Connect the Management port to a network accessible by the DP.
2. Use the monitor ports to connect to data sources (mirror ports or taps). There are four 1 GbE monitor ports (eth2...eth5, from left to right) and 2 10GbE monitor ports (eth6...eth7, left to right).

## Accessing the Photon 300D

You can access the appliance using a VGA monitor and USB keyboard, using SSH to the Management port, or using a virtual console over the iDRAC port. The ports for these connections are all at the rear of the appliance, as illustrated above.

### VGA Console Access

For VGA console access, connect a display device to the system using one of the two VGA ports (one is in the front and the other is in the rear). Then, connect a USB keyboard to one of the USB ports (one is in the front and two are in the rear).

### SSH Access

The default management IP address on the appliance is **192.168.1.100/24**, and the default gateway IP address is: **192.168.1.1**. The default username and password are as follows:

- Username: **aella**
- Password: **changeme**

For SSH access to the appliance:

```
ssh -l aella 192.168.1.100
```

### Virtual Console over iDRAC

The iDRAC feature can be licensed directly from Dell; a free trial is available. There is an iDRAC Direct port on the front of the appliance and a dedicated iDRAC network port on the back.

## Changing the Management Configuration

Change the default management configuration. From the console or an SSH session:

1. Log in with the default username of **aella** and password of **changeme**.
2. You are immediately prompted to change the password.
3. Change the management IP address:  

```
set interface management ip <new management IP address>/<netmask>
```
4. Change the gateway IP address:  

```
set interface management gateway <new gateway IP address>
```
5. Change the DNS IP address:  

```
set interface management dns <new DNS server IP address>
```
6. Confirm your changes with the `show interface`, `show gateway`, and `show dns` commands.
7. Set the host name, which is displayed in Stellar Cyber and should be unique for each sensor:  

```
set hostname <new hostname>
```
8. If necessary, set the proxy HTTP server:  

```
set proxy http://<proxy IP address:port>
```
9. Optionally assign the tenant (if you skip this, the sensor is assigned to Root Tenant):  

```
set tenant_id <Tenant ID from Stellar Cyber>
```
10. Set the IP address of the DP:  

```
set cm <DP IP address>
```

## Accessing Stellar Cyber

To log in to the Stellar Cyber UI, use Chrome or Firefox to navigate to the Data Processor's Management IP address:

```
https://<Data Processor Management IP Address>
```

The default username is **admin**, and the default password is **changeme**.

Go to **Collect | Sensor Overview** and authorize the sensor.